



WELCOME TO

NLNOG DAY 2025

WELCOME EVERYBODY!

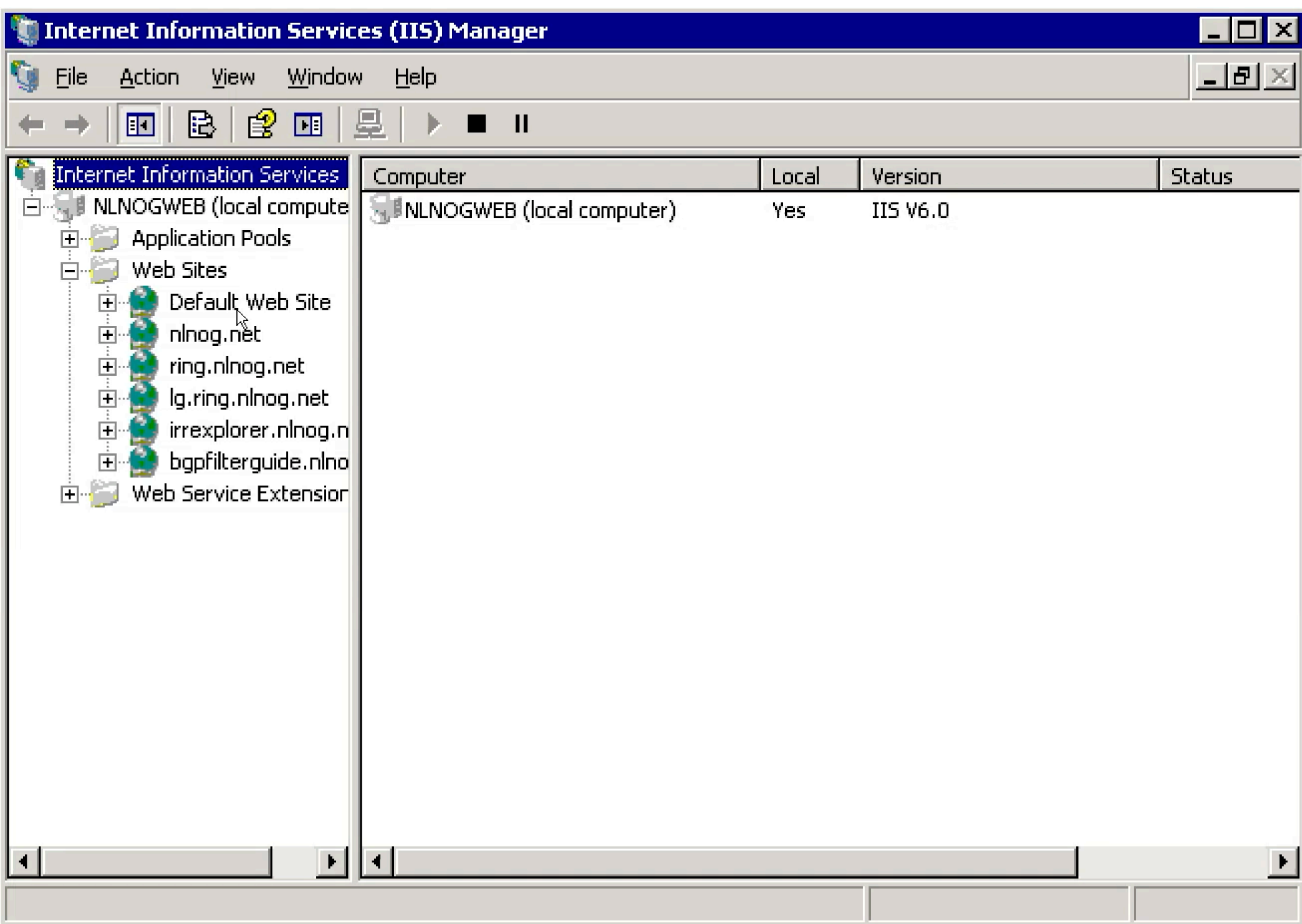
- ▶ This is a professional event, so please be the best you can be!
- ▶ Please contact Niels Bakker or Nathalie in case of problems
- ▶ Keep in mind: this event is by techies, for techies
- ▶ The event is streamed on our Youtube channel and all recordings of all presentations will be made available there
- ▶ You can ask questions to presenters by using the microphones, or via IRC (<https://nlnog.net/irc>) or Discord (<https://nlnog.net/discord>)

OUR AMAZING SPONSORS: THANK YOU

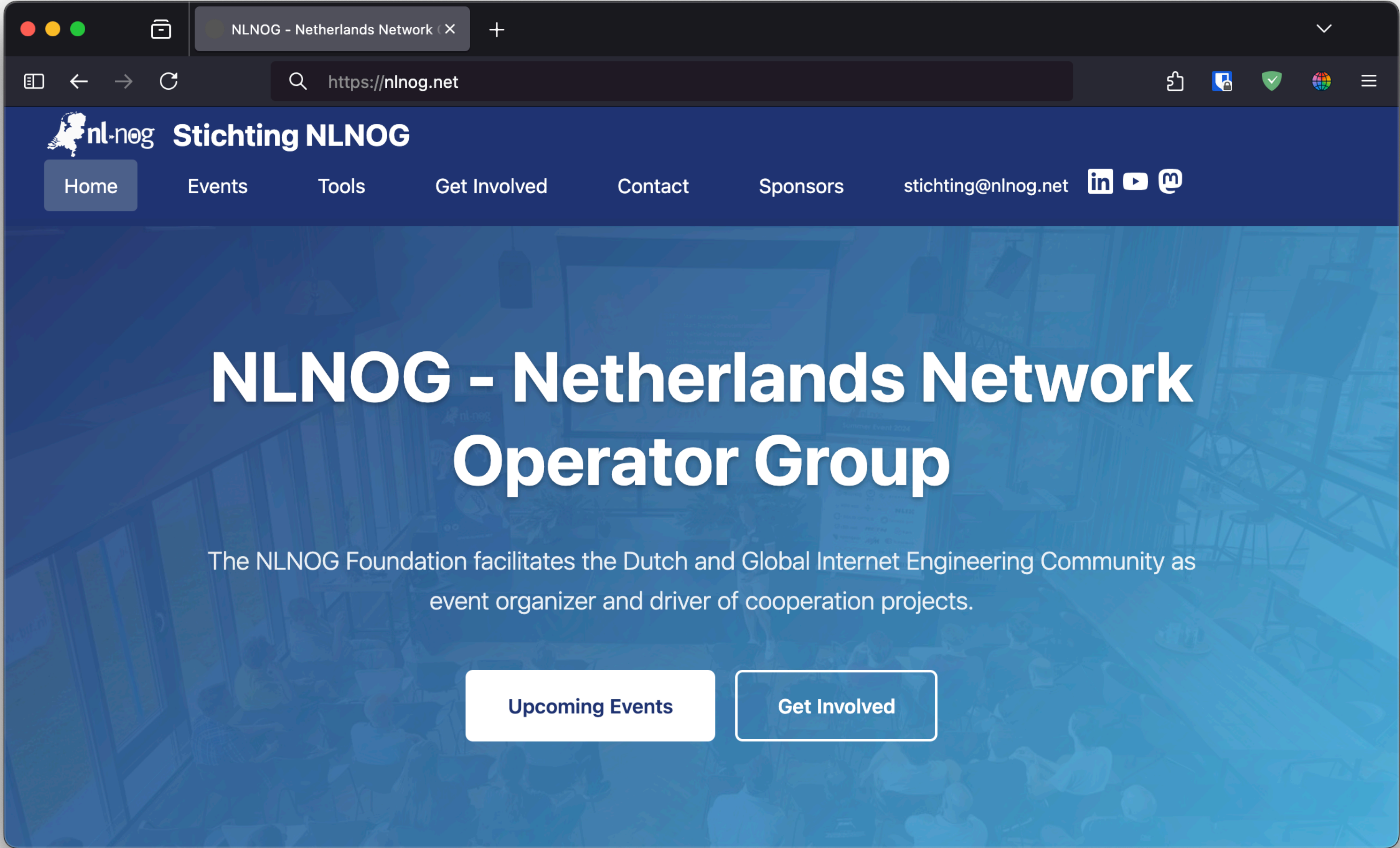


THINGS WE DID THIS YEAR...

- ▶ New Years Drink on January 24th was great, lots of new and familiar faces!
- ▶ Lekker Weer NLNOG on June 13th: “Things you don’t want to hear, but need to know” with insightful talks by Octavia de Weerdt, Alex de Joode and Rudolf van der Berg
- ▶ Some changes in roles in the NLNOG board
- ▶ We onboarded a number of new sponsors ❤️
- ▶ We built a new website, and now it’s time to launch it!



OUR NEW WEBSITE IS NOW LIVE!





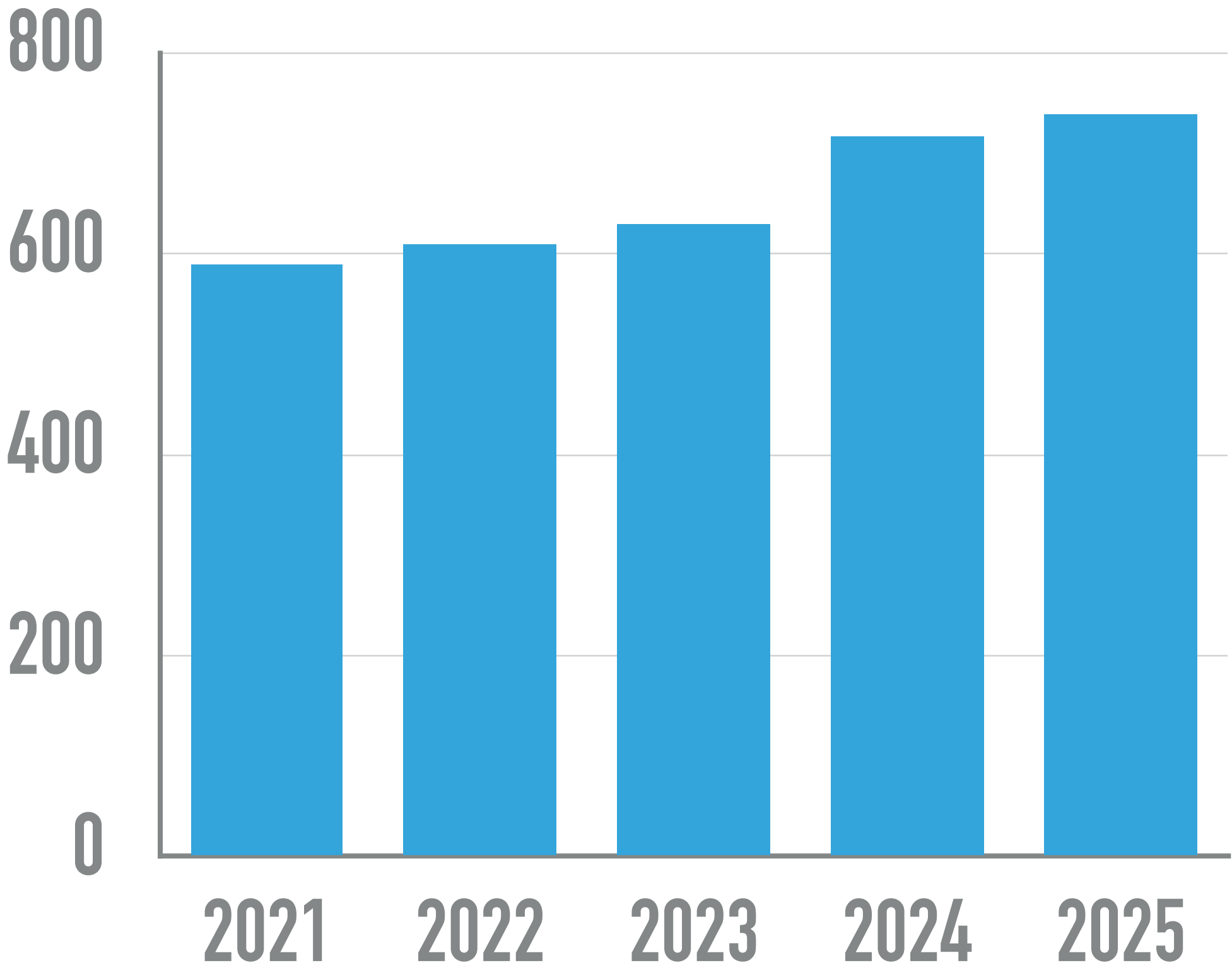
RING-ADMINS @ NLNOG.NET

NLNOG RING UPDATE

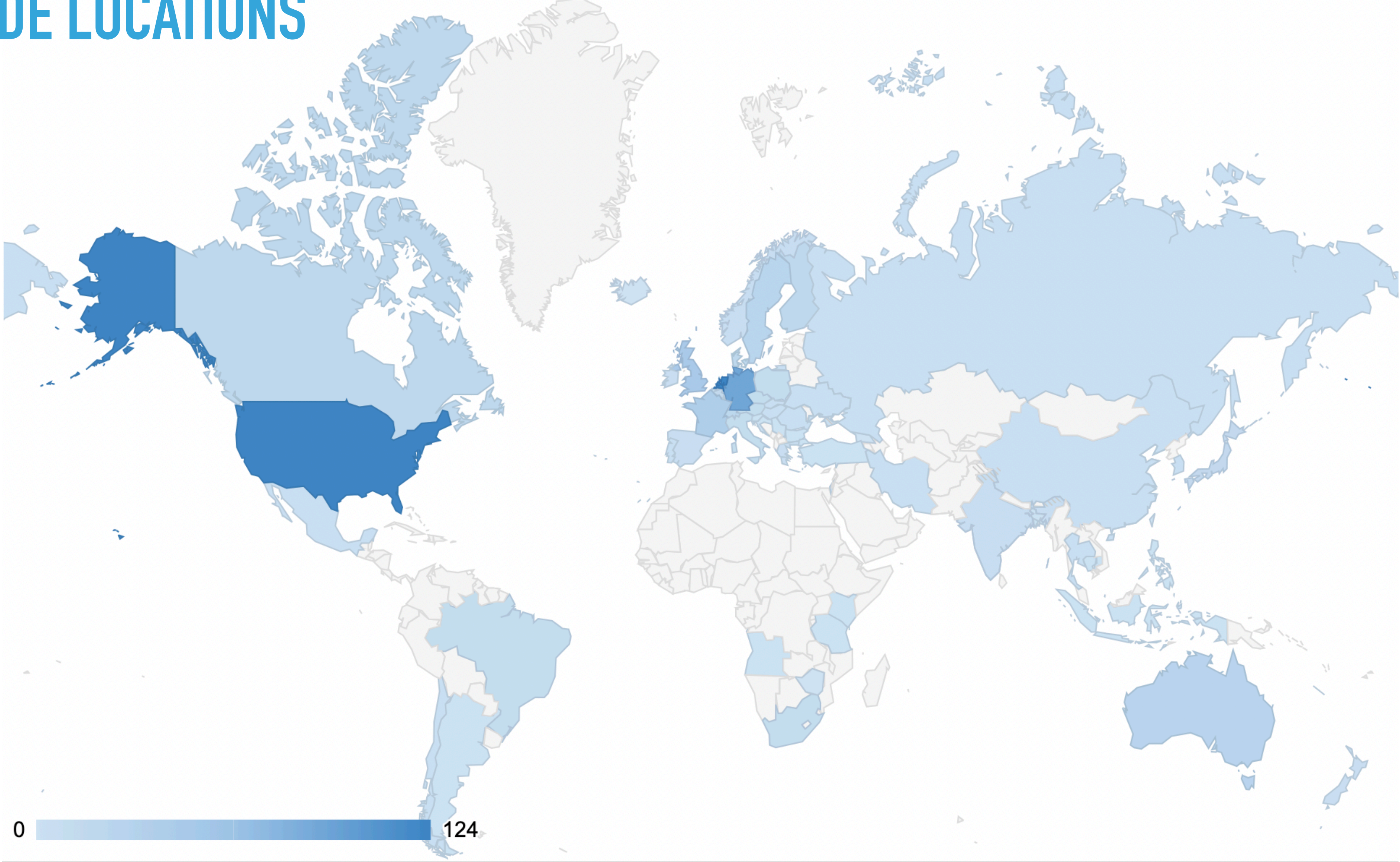
SOME STATISTICS

- ▶ RING Nodes: **738** (+22)
- ▶ Unique ASNs: **550** (+8)
- ▶ Organisations: **533** (+5)
- ▶ Countries: **58** (-3)
 - ▶ New: Angola, Serbia
 - ▶ Lost: Georgia, Guam, Iceland, Taiwan, Zimbabwe

NODES



RING NODE LOCATIONS



NLNOG LOOKING GLASS: API SUPPORT ADDED

- ▶ Sebastiaan Koetsier provided code for an API to the LG
- ▶ The API provides all information shown on the webpage in JSON format
- ▶ Documentation is in our Github repository (and linked from the Looking Glass website)
- ▶ Example:
<https://lg.ring.nlnog.net/api/prefix?q=193.0.14.0/23&nodes=BITTERBAL1-V4>

LOOKING GLASS API EXAMPLE

```
python3
python3 (Python)
>>> print(requests.get("https://lg.ring.nlnog.net/api/prefix?q=193.0.14.0/23&peer=BITTERBAL1-v4").json())
{
  'collected': None,
  'prefix': '193.0.14.0/23',
  'query_id': 'i9ppZEd4mX',
  'routes': {
    '193.0.14.0/23': [
      {
        'aspath': [
          ['200995', 'BITTERBAL, NL'],
          ['1103', 'SURFNET-NL SURFnet, The Netherlands, NL'],
          [
            '25152',
            'K-ROOT-SERVER Reseaux IP Europeens Network Coordination Centre RIPE NCC, NL'
          ]
        ],
        'avs': 'unknown',
        'bgp_id': '212.72.236.1',
        'communities': [
          ['2603:665', ''],
          ['2603:667', ''],
          ['11537:40', ''],
          ['11537:888', ''],
          ['20965:3000', ''],
          ['20965:5000', ''],
          ['25152:1', 'site=nl-ams']
        ],
        'exit_nexthop': '212.72.236.1',
        'extended_communities': [],
        'ip': '212.72.236.1',
        'large_communities': [['25152:1:1103', 'site=nl-ams:peer_as=1103']],
        'last_update': '3d04h24m',
        'last_update_at': '2025-09-13 17:50:43 UTC',
        'metric': 0,
        'origin': 'IGP',
        'otc': ['200995', 'BITTERBAL, NL'],
        'ovs': 'valid',
      }
    ]
  }
}
```

IRREXPLORER CHANGES:

- ▶ Many stability and maintenance (dependency) updates
- ▶ Added Support for python 3.12, dropped support for 3.7
- ▶ Fixed db lookups to prefer information in NIRs over RIRs
- ▶ Added support for route-set objects
- ▶ Added an option to only show errors and warnings



Prefix, IP, ASN or AS/route-set

Search

[Data source status](#)

☐ Reduced colour mode ☐ Show only error/warning

A FRIENDLY REMINDER...

- ▶ Our software and services are built and managed by volunteers
- ▶ All code is available in our Github repository
- ▶ Please report problems, submit code and report bugs
- ▶ Suggest new ideas for projects and tools
- ▶ Use our services respectfully
- ▶ Consider supporting NLNOG if you use these services!